



Portable Stereo System User's Guide



We bring good things to life.

IMPORTANT INFORMATION REQUIRED BY FEDERAL COMMUNICATIONS COMMISSION CONCERNING RADIO FREQUENCY INTERFERENCE

This device generates and uses radio frequency (RF) energy, and if not installed and used properly, this equipment may cause interference to radio and television reception. This equipment has been type tested and found to comply with the limits for a Class B Computing Device in accordance with the specifications in Subpart J of Part 15 of FCC Rules. These rules are designed to provide reasonable protection against radio and television interference in a residential installation. However, there is no guarantee that interference will not occur in a particular installations.

If this equipment does cause interference to radio or television reception (which you can determine by turning the equipment off and on), try to correct the interference by one or more of the following measures:

- Reorient the receiving antenna (that is, the antenna for the radio or television that is "receiving" the interference).
- Change the position of the unit with respect to the radio or television equipment that is receiving interference.
- Move the unit away from the equipment that is receiving interference.
- Plug the unit into a different wall outlet so that the unit and the equipment receiving interference are on different branch circuits.

If these measures do not eliminate the interference, please consult your dealer or an experienced radio/television technician for additional suggestions. Also, the Federal Communications Commission has prepared a helpful booklet, "How To Identify and Resolve Radio TV Interference Problems." This booklet is available from the U.S. Government Printing Office, Washington, DC 20402. Please specify stock number 004-000-00345-4 when ordering copies.

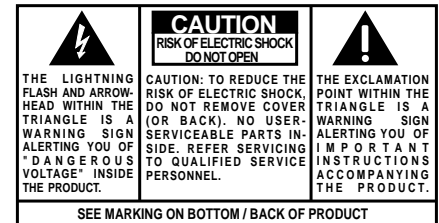
PRECAUTIONS

- Never open the cabinet under any circumstances. Any repairs or internal adjustments should be made only by a trained technician.
- Warning: Never operate this product with the cabinet removed.
- Do not touch the player with wet hands. If any liquid enters the player cabinet, take the player to a trained technician for inspection.
- This compact disc player uses a laser to read the music on the disc. The laser mechanism corresponds to the cartridge and stylus of a record player. Although this product incorporates a laser pick-up lens, it is completely safe when operated according to directions.
- Discs rotate at high speed inside the player. Do not use damaged, warped, or cracked discs.

IMPORTANT BATTERY INFORMATION

- Alkaline batteries are recommended for longer play. Carbon-zinc or nickel cadmium rechargeable batteries can substantially reduce play time.
- If you're not going to use your player for a month or more, be sure to remove batteries because they can leak and damage the unit.
- Dispose of batteries in the proper manner, according to federal, state, and local regulations.
- Any battery may leak electrolyte if mixed with a different battery type, if inserted incorrectly, if all batteries are not replaced at the same time, if disposed of in fire, or if an attempt is made to charge a battery not intended to be recharged.
- Discard leaky batteries immediately. Leaking batteries can cause skin burns or other personal injury.

WARNING: TO PREVENT FIRE OR ELECTRICAL SHOCK HAZARD, DO NOT EXPOSE THIS PRODUCT TO RAIN OR MOISTURE.



INTRODUCTION

Your GE Portable Stereo gives you great sound that you can take with you almost anywhere. You can listen to the radio, CDs, or cassette tapes, and can record to cassette from the radio or CDs.

In order to get the best possible use from your stereo, we suggest that you take a few minutes right now to read this User's Guide, and familiarize yourself with your new stereo.

The first Section, "Getting Started," tells you how to power up your stereo, and discusses the general controls (those you use with the radio, tape player, and the CD player). The sections that follow, show you how to operate each of these three components.

If you have any questions, be sure to check the Index, or the Table of Contents to help you find the answer. If you have any problems, check the Troubleshooting Tips section for a quick and easy solution.

TABLE OF CONTENTS

GETTING STARTED	2
POWERING UP	2
GENERAL CONTROLS	2
RADIO OPERATION	3
CASSETTE PLAYER OPERATION	3
CASSETTE PLAYER CONTROLS	3
INSERTING A TAPE	4
PLAYING A TAPE	4
RECORDING FROM THE RADIO	5
RECORDING FROM COMPACT DISCS	5
CD PLAYER OPERATION	6
INSERTING A CD	6
CD PLAYER CONTROLS	6
CARE AND MAINTENANCE	7
GENERAL GUIDELINES	7
CLEANING THE LASER LENS	8
HANDLING COMPACT DISCS	8
CLEANING THE TAPE HEADS	9
SERVICE INFORMATION	9
TROUBLESHOOTING TIPS	10
INDEX	11
WARRANTY	12

GETTING STARTED

POWERING UP

You can power your GE portable stereo by plugging in the AC power cord, or by inserting 6 D-sized batteries.

To insert the batteries:

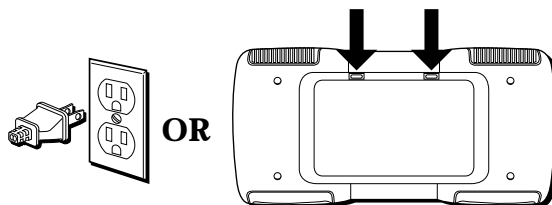
1. Press down on the tabs and lift up to remove the battery compartment door from the bottom of the unit.
2. Insert 6 D-sized batteries as shown in the diagram on the unit.
3. Replace the battery compartment door.

When you have the battery compartment door off, you might want to store the cord inside to keep it out of the way while you're using the batteries.

GENERAL CONTROLS

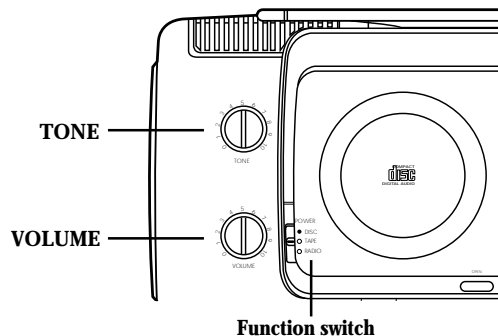
It doesn't matter whether you are using the radio, the tape player, or the CD player, you need to know where these controls are:

- POWER (function) switch — Use to choose the function. By choosing TAPE or DISC, you shut off power to the RADIO.
- VOLUME — Use to control the volume.
- TONE — Use to adjust the tone to your preferred listening level.



Open the battery compartment door and insert 6 D-sized batteries.

NOTE: If you're not going to use the stereo for more than a month, be sure to take the batteries out, or they might leak and cause you all kinds of problems.



RADIO OPERATION

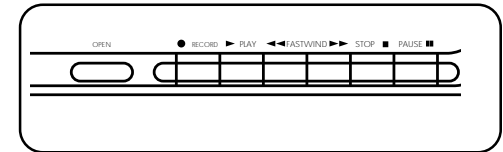
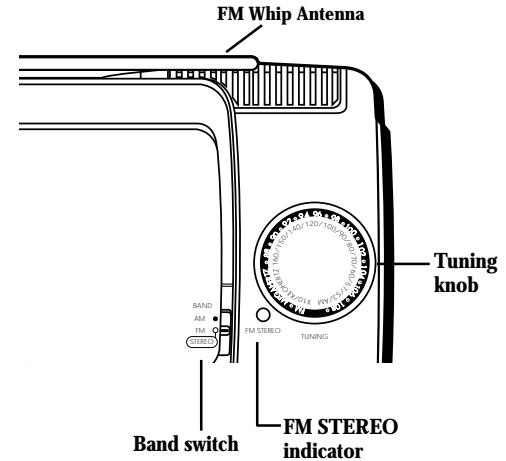
Listen to the radio by sliding the POWER switch to RADIO, and then:

- Using the BAND switch to choose AM or FM Stereo.
- Using the TUNING knob to choose a station. When tuning in an FM station, the FM STEREO indicator light shows you when you're receiving a station broadcast in stereo.
- Raising and adjusting the whip antenna to get better FM reception.
- Repositioning the unit to get better AM reception. (The AM antenna is built-in, so moving the unit itself helps improve AM reception.)

CASSETTE PLAYER OPERATION

CASSETTE PLAYER CONTROLS

- OPEN — Press to open the Cassette/CD compartment.
- RECORD — Press to record from the radio or CDs.
- PLAY — Press to play cassettes.
- FASTWIND (◀◀ ▶▶) — Press to rewind or fast forward the cassette.
- STOP — Press to stop playing, recording, or fastwinding a cassette.
- PAUSE — Press to interrupt playing or recording. Press a second time to continue.



INSERTING A TAPE

1. Press OPEN to open the Cassette/CD compartment.
2. Place a tape into position and gently press down.
3. Manually close the compartment door.

PLAYING A TAPE

1. Insert a tape.
2. Slide the FUNCTION switch to TAPE.
3. Press PLAY.

If the tape is not at the position you want to listen to, press one of the FASTWIND buttons (◀◀ or ▶▶) until you get to the desired point on the tape, and then press PLAY.

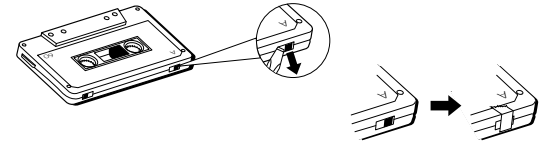
4. Press PAUSE to interrupt tape play; press PAUSE again to continue.
5. Press STOP to stop play completely. (The tape automatically stops when it gets to the end.)

ERASE PROTECTION

When you record new material, the cassette deck records over whatever is on a tape. To protect a tape from accidental erasure, break off one or both plastic tabs on the top of the cassette tape (one for each tape side). If you decide later to record on the tape, seal the hole with a piece of cellophane tape.



TIP: Slack in your tapes can cause scratches on the tape, or worse yet, the tape could break. If you notice some slack in the tape, use a pencil to tighten it up before you insert it.



RECORDING FROM THE RADIO

1. Slide the FUNCTION switch to RADIO.
2. Tune the radio to the desired station.
3. Insert a blank cassette tape (unless you want to record over something else), and rewind it to the point at which you want to begin recording.
4. Press RECORD to begin recording.
5. Press STOP to stop recording. (The unit automatically stops recording at the end of the tape.)

RECORDING FROM COMPACT DISCS

1. Slide the FUNCTION switch to DISC, and then insert a compact disc.
2. Insert a blank cassette tape, and rewind it to the point at which you want to begin recording.
3. Press RECORD to begin recording.
4. Press the PLAY button on the CD player.
5. Press STOP (on the cassette controls) to stop recording.

PAUSING A TAPE WHILE IT'S RECORDING

1. Press PAUSE to interrupt recording.
2. Press PAUSE again to continue recording.

DON'T INFRINGE ON COPYRIGHTS

This product is capable of substantial uses that do not constitute infringement under the Copyright Laws. It is sold only for such uses, and it should not be used to infringe the Copyrights of others.

TIP: Using the PAUSE button gives you a much cleaner interruption than STOP when recording something on tape. Press PAUSE to interrupt recording; then press it again to continue.

TIP: The built-in Automatic Level Control automatically sets the input level for optimum recording sound, which means you can adjust the volume setting without affecting the quality of the recording.

CD PLAYER OPERATION

The display on the front of the stereo give you information such as which track on the CD is playing, and whether you are in pause or play mode. The following table shows you what you can expect to see in the display:

<i>Display Item</i>	<i>Meaning</i>
A number	The track number currently playing
A flashing number	The unit is in pause mode.
cd	There is a disc in the compartment.
nd	There is no disc in the compartment.

INSERTING A CD

1. Press the OPEN button to open the disc compartment door.
2. Place a disc on the spindle with the label facing up.
3. Tightly close the compartment door (or CD won't play).

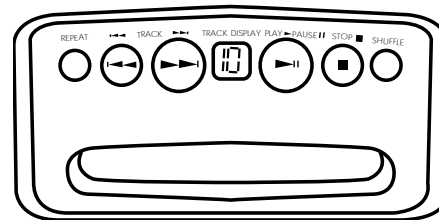
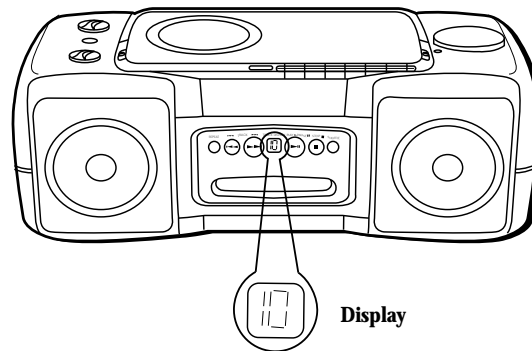
CD PLAYER CONTROLS

FROM RIGHT TO LEFT

- REPEAT — Press REPEAT one time (in Play mode) to repeat all tracks; press again to turn off repeat function.
- TRACK (◀◀ or ▶▶)— Use these buttons to move backward or forward through a disc to a specific song.

Press and hold one of the TRACK buttons while the disc is playing to search backward or forward through a particular track.

 Look for this Logo
You can play 3" and 5" compact discs that have this logo.



- PLAY/PAUSE (▶ ||) — Press the PLAY/PAUSE button to begin disc play. Press PLAY/PAUSE while a disc is playing to interrupt play; then press PLAY/PAUSE again to continue play.
- STOP (■) — Press to stop play.
- SHUFFLE — Use the Shuffle feature to play tracks in random order.
While in Stop or Play mode:
 1. Press the SHUFFLE button (the shuffle indicator blinks).
 2. Press the PLAY button to begin shuffle play (the shuffle indicator stop blinking and remains on).
 3. Press SHUFFLE to turn off the shuffle feature and continue playing the CD.Or
Press STOP once to stop CD play; then press STOP a second time to turn off shuffle feature.

CARE AND MAINTENANCE

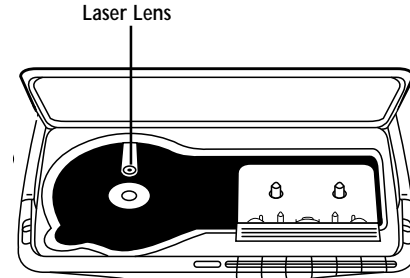
GENERAL GUIDELINES

- Do not touch the laser lens on the CD player.
- Temperature changes can cause condensation to form on the laser lens. If condensation forms on the lens, leave the disc compartment door open (with no disc) for an hour to remove condensation.
- Exposure to direct sunlight or extreme heat (such as inside a car parked in the sun) can cause damage or malfunction.
- To prevent dust from reaching internal parts, keep the disc compartment door closed when not using (except when necessary to remove condensation).
- Do not place objects on top of the player.

CLEANING THE LASER LENS

It's important that you periodically clean the laser lens, especially when dust or fingerprints are evident. Not cleaning the laser lens can result in inferior sound quality or no sound at all. To clean the lens, follow these directions:

1. Turn off the unit's power and disconnect the AC power.
2. Open the disc compartment and remove the disc (if there is one).
3. Clean the lens with a soft brush or use an air blower brush designed for cameras.
4. If you still are not able to remove dirt particles, moisten a cotton swab with isopropyl alcohol and gently apply to the face of the laser lens, rubbing gently until all traces of dirt are removed.



HANDLING COMPACT DISCS

To get the best possible sound from your compact discs, you need to keep them clean. Note the following guidelines regarding the use and care of compact discs:

- Don't touch the playing surface (the side without the label).
- Don't store discs in places with high temperatures or high humidity—they can become warped.
- Don't put tape or any other adhesives either side of the disc.
- Don't use cleaners or anti-static sprays on discs, such as those used on conventional phonograph records.
- Always store each disk in its case and not in the CD player.
- Before playing a disc, wipe any dust or fingerprints from the playback surface with a soft cloth. Wipe from the hub to the edge with a straight motion.

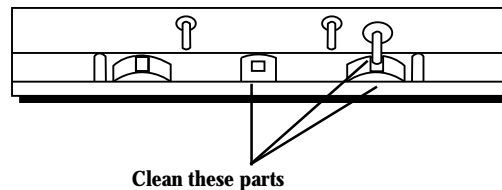
CLEANING THE TAPE HEADS

Over time, iron oxide particles from the magnetic tape build up on the parts that come in contact with the tape. These deposits can cause incomplete erasure, a muffled sound during playback, and might prevent automatic stop.

To clean the heads, open the compartment door, push the PLAY button and gently clean the heads, capstan and pinch wheel with a head cleaner.

Always unplug the power cord when cleaning, and allow 30 minutes drying time when using a liquid cleaner.

Clean heads after every 40 hours of use.



SERVICE INFORMATION

This product should be serviced only by those specially trained in appropriate servicing techniques.

Attach your sales receipt to the booklet for future reference, or jot down the date this product was purchased or received as a gift. This information will be valuable if service should be required during the warranty period.

Purchase Date _____

Name of Store _____

RECORDING THE SERIAL NUMBER

Serial No. _____

Model No. (from the bottom of the player) _____

TROUBLESHOOTING TIPS

CD PROBLEMS

<i>Problem</i>	<i>Solutions</i>
System does not turn on	<ul style="list-style-type: none">• Make sure AC power plug is secure in the outlet, and outlet has power.• Batteries may be dead. Install new batteries.
Disc in place but unit won't play	<ul style="list-style-type: none">• Make sure FUNCTION switch is set to DISC.• Make sure disc label is facing up.• Make sure disc is clean.• Pause mode is activated
Disc skips	<ul style="list-style-type: none">• Disc may be damaged or dirty; check disc.• Make sure unit is sitting on a secured spot. Vibration or jarring can cause the disc to skip.

RADIO & TAPE PROBLEMS

<i>Problem</i>	<i>Solutions</i>
Poor FM reception	<ul style="list-style-type: none">• Make sure antenna is fully extended.• Electrical interference in your home can cause poor reception. Move the unit away from electrical appliances, especially those with motors (such as hair dryers and vacuum cleaners), or transformers (such as fluorescent lamps).
Distorted or noisy recordings	<ul style="list-style-type: none">• Tape heads are dirty; clean them.• Tape is damaged. Try another tape.
Record button won't depress	<ul style="list-style-type: none">• Tabs on edge of cassette may be missing or broken. If you want to record on that cassette, cover the holes with removable tape.

INDEX

- A**
 - AC power cord 2
- B**
 - BAND switch 3
 - batteries 2
 - inserting 2
 - storage 2
- C**
 - Care and Maintenance 7
 - Cassette buttons
 - FASTWIND 3
 - OPEN 3
 - PAUSE 3
 - PLAY 3
 - RECORD 3
 - STOP 3
 - cassette player features
 - automatic level control 5
 - CD Player Buttons
 - PLAY/PAUSE 5, 7
 - REPEAT/ENTER 6
 - STOP 7
 - TRACK/SEARCH 7
 - CD Player Operation 6
 - Cleaning the Laser Lens 8
 - compact discs
 - 3" and 5" 6
 - handling and care 8
 - condensation on the laser lens 7
- D - I**
 - display items 6
 - Erase Protection 4
 - General Controls 2
 - Inserting a Tape 4
- O - P**
 - OPEN button 6
 - pausing a tape 5
 - PLAY/PAUSE button 7
 - Playing a Tape 4
 - POWER (function) switch 2
- R**
 - reception 3
 - Recording from Compact Discs 5
 - Recording from the Radio 5
 - REPEAT/ENTER button 6
 - Repeating tracks 6
- S**
 - Searching within a track 7
 - Service Information 9
 - Shuffle play 7
 - STOP button 7
- T**
 - TONE 2
 - TRACK/SEARCH button 7
 - TUNING knob 3
- V**
 - VOLUME 2

ONE-YEAR LIMITED WARRANTY

What does your warranty cover?

- Any defect in material or workmanship.

For how long after the original purchase?

- One year.
- The warranty for rental units begins with the first rental.

What will we do?

- Provide you with a new, or at our option, a refurbished unit.
- The exchange unit is warranted for the remainder of your product's original one-year warranty period.

How do you make a warranty claim?

- Properly pack your unit. Include any cables, etc., which were originally provided with the product.
- Include a copy of the sales receipt or other evidence of date of original purchase. If the unit was a gift, provide a statement specifying the date received. Also, print your name and address, and a description of the defect.
- Ship the unit standard UPS or its equivalent to:
Thomson Consumer Electronics, Inc.
Product Exchange Center
32 Spur Drive
El Paso, Texas 79906

- Pay any charges billed to you by the Exchange Center for service not covered by the warranty.
- A new or refurbished unit will be shipped to you prepaid freight.

What does your warranty not cover?

- Customer instruction. Your Use and Care Guide provides information regarding the operating instructions and user controls. For additional information, ask your dealer.
- Installation and set-up service adjustments
- Batteries
- Damage from misuse or neglect
- Products that have been modified or incorporated into other products.
- Product purchased or serviced outside the USA.
- Acts of God, such as but not limited to lightning damage.

How does state law relate to this warranty?

- This warranty gives you specific legal rights, and you may also have other rights which vary from state to state.

What if you purchased your product outside of the United States?

- This warranty does not apply. See your dealer for details.

Thomson Consumer Electronics, Inc.